

Cow Sense[®] Product Support Bulletin

Document Number: **PSB020**

Issue Date: **12/2/2011**

Revised Date: **12/2/2011**

Product: **Cow Sense[®]**

Version: **4.82 and later**

Page: **1 of 1**

Cow Sense Verified

Discussion: The purpose of this Product Support Bulletin is to document and discuss how to submit animals for age and source verification through Cow Sense Verified under the umbrella of the USDA Process Verified Program offered by Micro Beef Technologies.

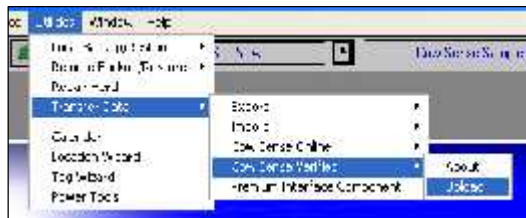
To find out more information on Cow Sense Verified, visit the following link:

<http://www.cowsense.com/verified.htm>

Steps:

1. Open Cow Sense and mark the cattle to be sent. (Note in order to submit cattle for age and source verification through Cow Sense Verified, they must be tagged with an approved Electronic Identification Device and recorded in Cow Sense).
2. Assign a location by going to **Utilities > Location Wizard**.
 - a. Under Step 1, choose **Set Up Locations**.
 - b. You are required to enter your Name and Premises ID. Description is optional.
 - i. If you do not have a Premises ID, enter your zip code instead.
 - c. For more information about the Location Wizard, please see PSB017.

3. Go to: **Utilities > Transfer Data > Cow Sense Verified > Upload**.



4. Fill out the Ship Date, Reference number, and a description.
5. When the registration information form opens, fill out the required fields. (Indicated with a “*”.)
6. Follow the prompts to electronically submit the information to Cow Sense Verified.
7. You will receive an “Operation Complete” message after the export has been successfully completed.
8. Cow Sense staff will send you an Audit Request Form, which will need to be completed and returned with payment. Upon receipt at our office, an audit will be scheduled. After successful completion of the audit, you will receive certification from Micro Beef Technologies.

