

# Premium Interface Component

## *User's Reference*

American-International Charolais Association

### Introduction

Midwest MicroSystems recognizes and applauds the leadership of the American-International Charolais Association in encouraging electronic data transfer. Accordingly, we have developed a breed template in the **Premium Interface Component (PIC)** that customizes **Cow Sense** to fit the exact fields of information that the Association requires. Cow Sense then allows you maximum flexibility to customize the rest of the program to your individual management needs. The software handles all of the technical aspects of data structure and file layouts and gives you the simple convenience of menu driven commands. Apply the pre-defined data structure to your Cow Sense herd, then simply select import and export routines that are written for specific data exchange functions. Validations operate in the background to ensure that data requirements are met on both import and export.

The primary functions of PIC are to: maintain standardized fields required by the respective breed associations; send in applications for animal registration; meet the requirements of total herd reporting; and to receive back registrations and EPD updates. Accordingly we have organized this document to follow the format of the respective procedure(s) documented in the *American-International Charolais Association Breeder's Guide*.

The Cow Sense Users' Guide will explain the use and functionality of the program and the many new features available with Cow Sense Version 4. This document will assist you in locating and working with the specific fields that are used in the Charolais Premium Interface Component (PIC) of Cow Sense Software. To launch the Premium Interface Component from the Cow Sense Main Menu - Go to: **Utilities > Transfer Data > Premium Interface Component**.

The following are detailed instructions for entering information, required field verification and data location within Cow Sense herd management software. In addition, this information has been condensed in a series of Quick Reference Tables for easy reference in using the Cow Sense Premium Interface Component.

### Installation of the PIC Breed Template

The first step when using PIC for the first time is to install a breed template. A breed template is used to customize your herd by adding necessary fields or changing description codes so you can conform to association rules and export the necessary information needed by that association.

If Midwest MicroSystems did your initial herd build or conversion then your template is already in place and you do not need to apply it to this herd. If you are applying the template to a previously established or new herd for the first time, Go to **PIC Main Menu Select: Breeds > Templates > Charolais**. The program will display the name and location of the current herd and ask you to confirm that the herd listed is the one, upon which you wish to apply the template. Select either the 'Yes' or 'No' button.

After a breed template is applied PIC will customize itself for the specific breed by adding menu options that can be chosen to perform various operations like exporting registration and performance data to the association and even updating your herd with data received from the association. Please note that you can only apply one breed template to your herd at a time.

### Submitting Registration and Performance Information from PIC

To electronically submit a registration application with the Association via the Cow Sense Premium Interface Component the following information must be gathered and input into Cow Sense. On the following pages that follow is a quick reference table where you can locate the fields and the type of information that is required to be entered in those fields. After reviewing these tables, you will better understand the type of data that needs to be entered before trying to export data to the association.

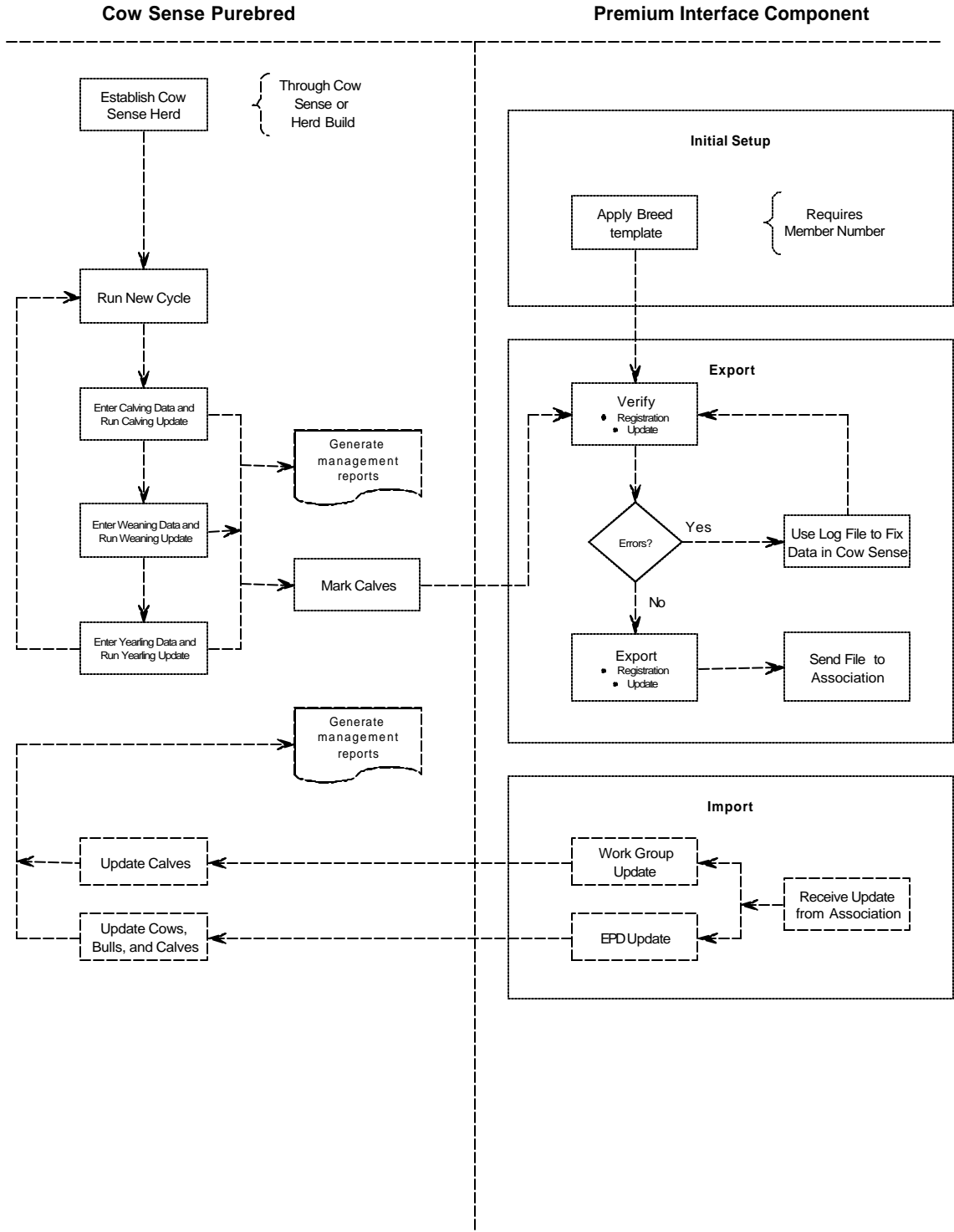
Once all necessary information has been entered into Cow Sense Version 4, you can then prepare to submit that information to the association. The following steps will help guide you through the process of submitting registration information to the association:

1. First review the list of calves in Cow Sense and Mark all records to be Exported (refer to page 69 of the *Cow Sense User's Guide*).
2. Once records are Marked for Export proceed to the Cow Sense Main Menu and **Select > Utilities > Transfer Data > Premium Interface Component**.
3. Once PIC has launched, proceed to the Main Menu bar and **Select: Breeds > Export > Charolais > Registration > Verify**.
4. A Verify Registrations window will appear asking if you wish to verify the information from the Cow Sense herd listed before exporting it to a file for submission to the association. Select the 'Verify' button.
5. An Export File window will appear asking you to confirm the number of records to be verified. If this is the same number as the records you marked, Select the 'Yes' button, if not Select the 'No' button and repeat the procedure to determine the discrepancy.
6. After selecting the 'Yes' button another window will appear that asks if you want to print warnings in the result log. It is recommended that you choose 'Yes'. After selecting the 'Yes' button a progress bar will appear and the verification process will take place. This could take some time.
7. After this process is complete a window will appear either telling you that no errors were found or asking you if you wish to view the error log file. Choose 'Yes'. If any errors were encountered, they will now be displayed in Notepad. Please note that PIC validates all records to ensure that all required information is included and reports any errors encountered, all warnings that were issued, as well as all records exported at this time. Also notice that the program displays the name of the exported file and where you can find it (in the Cow Sense folder of the installed drive in a sub-folder labeled Export).
8. Review these errors (if there are any) and make any necessary changes in Cow Sense.
9. Repeat the verification process until no errors are encountered.

## Cow Sense™ Herd Management Software

10. Once you have completed the verification process you are now ready to run the final export for the association. Go to the Main Menu bar and **Select: Breeds > Export > Charolais > Registration > Export.**
11. An Export Registrations window will appear asking if you wish to export the information from the Cow Sense herd listed, exporting it to a file for submission to the Association. Select the 'Export' button.
12. An Export File window will appear asking you to confirm the number of records to be verified. If this is the same number as the records you marked, Select the 'Yes' button, if not Select the 'No' button and repeat the procedure to determine the discrepancy.
13. After selecting the 'Yes' button another window will appear that asks if you want to print warnings in the result log. It is recommended that you choose 'Yes'.
14. After selecting the 'Yes' button another window will appear asking you to confirm the breeder information that will be used for the registration of your calves. Click on 'Submit Under Different Name' if you wish to change the person who is registering the calves.
15. After selecting the 'Done' button you will be asked to confirm your email address. Re-enter your email address and click 'OK'.
16. The information you chose to use will be displayed in another window for your review. After clicking 'Yes' a confirmation window will appear telling you who will be registering the marked calves. Please note that if there is more than one breeder registering calves you will have to run a separate export for each of them. Click 'Yes' if this information is correct and a progress bar will appear and the export process will take place. This could take some time.
17. After this process is complete a window will appear that indicates the Export function was complete. Please note that PIC will validate the data one last time to ensure that there are no errors. If there are errors encountered you will be able to review them the same way as in the verification process. Please note that the error log displayed in the Export routine is more abstract and may not list every error. It is recommended that you always use the verification process until no errors are found. This will save you some time.
18. When all records have been successfully exported you can either attach the export file to an e-mail and send it to the association or copy it onto a diskette and send it to the association. If you wish to print out the registration report with all of the calving information, go to the Main Menu bar and **Select: Breeds > Export > Charolais > Registration > Print.**
19. A new window will open up displaying the report. Please note that this report can only be displayed once. If you wish to print out this registration report do it now or you will have to run the export again in order to display the report for printing. If the association prefers hard copy registration reports you can send these into the association. It is recommended you print two copies of the registration report so you also have a copy to keep for your records.

You have now completed registration of your calves.



## CHAROLAIS REGISTRATION FILE LAYOUT

**TABLE 1: ENTER DATA CALVES, COWS AND BULLS**

Entry Form	Cow Sense Field(s)	Required	Description/Use	Assoc Field Name
Calving Main	Birth Date	Always	Calf's Birth Date (mm/dd/yyyy)	CalfBirthDate
Calving Main	Birth Weight		Calf's Birth Weight	CalfBirthWeight
Calving Main	Born As		Enter type of birth: S = Single (Converted to '1' for export to the association) TB = Twin to Bull (Converted to '2' for export to the association) TH = Twin to Heifer (Converted to '2' for export to the association) E = Embryo Transfer (Converted to '1' for export to the association) ES = Split embryo (Converted to '2' for export to the association) C = Clone (Converted to '1' for export to the association) R = Triplet (Converted to '3' for export to the association)	TwinCode
Calving Main	Calf Breed		Enter Calf's Breed from drop down menu. To define a new breed composition, go to Define Groups -> Breeds. Here you can define a new breed code for cross breeds. By using Calf Breed, PIC looks up the breed compositions for export to the association.	Breed1Desc, Breed1Frac, Breed2Desc, Breed2Frac, Breed3Desc, Breed3Frac
Calving Main	Calf ID	Always	Calf ID	HerdNumber
Calving Main	Calving Ease, Calf History		Calving Ease Enter one of the following : 1 = Unassisted 2 = Easy pull 3 = Hard Pull – puller used 4 = Caesarean 5 = Abnormal Presentation  Calf History 5 = Stillbirth (Dead Calf) (Converted to '6' for export to the association)  PIC will look at these two fields to produce the calving ease code for the association.	EOC

# Cow Sense™ Herd Management Software

Calving Main	Color	If Registering Calf	<p>Calf's Body Color Enter one of the following: W = White L = Light cream C = Dark cream S = Light straw G = Gray O = Other</p>	BodyColor
Calving Main	Cow ID	Always	Cow ID	CowID
Calving Main	Poll	If Registering Calf	<p>Poll Status Enter one of the following: H = Horned P = Polled S = Scurs D = De-horned</p>	CalfPsh
Calving Main, Calving Main, Supplemental (Calf)	Raised As, Calf History, Disposal Code		<p>Enter the following if it applies:</p> <p>Raised As S = Single on Own Dam (Converted to '2' for the association) F = Single on Foster Dam T = Twin on Own Dam (Converted to '1' for the association) G = Twin on Foster Dam (Converted to '0' for the association) A = Artificially Raised</p> <p>Calf History 5 = Calf dead at birth (Converted to '4' for the association)</p> <p>Disposal Code 3 = Calf died for other reason (Converted to '6' for the association) 4 = Calf died to disease (Converted to '5' for the association) 6 = Calf sold prior to weaning (Converted to '3' for the association)</p>	CalfCode
Calving Main	RE Tattoo, LE Tattoo	Always	<p>LE Tattoo or RE Tattoo Enter the Calf's Tattoo into either LE or RE. PIC will use which ever ear has the tattoo for the export to the association. (note: cannot have a tattoo in both ears)</p>	Phn
Calving Main		Always	<p>PIC will automatically fill in this association field during the export. The only user input needed is to enter tattoo into LE or RE.</p>	PhnLoc

# Cow Sense™ Herd Management Software

Calving Main	Recip ID	If ET Calf	Calf's Recipient ID (ET calves only)	RecipHerdID
Calving Main	Sex	Always	Calf sex (Enter one of the following) B = Bull (Converted to 'M' for export to the association) H = Heifer (Converted to 'F' for export to the association) S = Steer	CalfSex
Calving Main	Sire ID		Sire ID	SireID
Weaning Main	Creep, Born As, Omit from ratios		PIC looks at Creep, Born As, and Omit from Ratios fields in CowSense to determine the Wean Mgt Code for the association.  If ET calf, PIC exports '4' to the association If No Ratio, PIC exports '3' to the association If Creep fed, PIC exports '2' to the association If not Creep fed, PIC exports '1' to the association	WeanMgtCode
Weaning Main	Name	If Registering Calf	Calf's Name (Limited to 24 characters)	CalfName
Weaning Main	Registration		Calf's Registration Number	CalfRegNum
Weaning Main	Wean Weight	If Live Calf	Calf's Weaning Weight	WeanWeight
Weaning Main	Wean Weight Date	If Live Calf	Date Calf's Weaning Weight was taken (mm/dd/yyyy)	WeanWeightDate
Weaning Main	Weaning Group (AICA)		Calf's Weaning Pasture Group (AICA) User defined groups. PIC will export left most character to the association. An example would be (A – 1 <sup>st</sup> Management Group) with 'A' being the left most character.	WeanPastGroup
Yrlg Main	Hip Height		Calf's Hip Height	YearHip
Yrlg Main	Scrotum		Calf's Scrotum measure	ScrotalCircum
Yrlg Main	Scrotum Date		Date Calf's Scrotum measure was taken (mm/dd/yyyy)	ScrotalDate

# Cow Sense™ Herd Management Software

Yrlg Main	Yearling Group (AICA)		Calf's Yearling Pasture Group (AICA) User defined groups. PIC will export left most character to the association. An example would be (A – 1 <sup>st</sup> Management Group) with 'A' being the left most character.	YearPastGroup
Yrlg Main	Yearling Mgt Code		Yearling Management Code Enter one of the following: 5 = Full Fed 6 = Intermediate 7 = Pasture	YearMgtCode
Yrlg Main	Yearling Weight		Calf's Yearling Weight	YearWeight
Yrlg Main	Yearling Weight Date		Date Calf's Yearling Weight was taken (mm/dd/yyyy)	YearWeightDate
Supplemental (Calf)	Blood Case		Blood Case Number (limit of 10 characters)	BloodCase
Supplemental (Calf)	Breeder Number, Breeder ID	Always	PIC uses the Member Number field on the calf for exports. If it is blank, the Breeder ID entered when the template was applied is used.	Breeder
Supplemental (Calf)	Calf Code	Always	Calf's Birth – PIC will calculate Calf Code from Calf History, Born As, and Raised As, except for the following codes, which you must input: 3 = Calf sold prior to weaning 6 = Calf died for other reasons	CalfCode
Supplemental (Calf)	Class Code	If Registering Calf	Calf's Class Code (Enter one of the following) 1 = Purebred Reg. 2 = Full French 3 = American French 4 = Verified Polled 5 = Charbray 6 = Cross Recordation 7 = Charbray Cross	ClassCode
Supplemental (Calf)	Hold Brand		Calf's Holding Brand (limit of 6 characters)	HoldBrand
Supplemental (Calf)	Hold Brand Location		Location of Calf's Holding Brand Examples: RE, LE, RS, LS, etc.	HoldBrandLoc



# Cow Sense™ Herd Management Software

Supplemental (Calf)	Nose Color	If Registering Calf	Calf's Nose Color (Enter one of the following) L = Light D = Dark	NoseColor
Supplemental (Calf)	Performance Only		Enter 'Y' if submitting calf information for performance only.	PerfOnly
Supplemental (Calf)	Service Type	Always	Service Type (Enter one of the following) N = Natural Service I = In herd AI O = Out of herd AI E = Embryo Transplant  PIC uses service type if it is not blank. If it is blank then PIC attempts to determine the service type by using the BornAs and SireType fields. If PIC is unsuccessful, an another attempt is made looking at the breeding records. If PIC is still unsuccessful, an error is generated in the log file, and the user must enter the service type in this field and run the export again.	ServiceType
Supplemental (Calf)	Switch Color		Calf's Switch Color (Enter one of the following) W = White L = Light cream C = Dark cream G = Gray O = Other	SwitchColor
Cow Main	Birth Date		Dam's Birth Date (mm/dd/yyyy) Recipient Dam Birth Date (if an ET Calf)	DamBirthDate, RecipBirthDate

Cow Main	Condition	No	<p>Dam's Condition Score (Enter one of the following if it applies)</p> <p><b>2xx - Disposal Codes (Died)</b>                  201 Illness                  202 Injury/accidental                  203 Calving difficulty                  204 Old age                  205 Disease</p> <p><b>3xx - Disposal History</b>                  301 Sold as breeding animal                  302 Calf performance/productivity                  303 Low production value \$ (not reproduction or performance related)                  304 Old age                  305 Infertile                  306 Cow calved but did not wean a calf                  307 Calving difficulty                  308 Aborted                  309 Prolapse                  310 Reproductive disease                  311 Poor body condition (unthrifty)                  312 Poor udder-teats                  313 Bad feet                  314 Structurally unsound                  315 Poor temperment                  316 Injury                  317 Illness                  318 Genetic defect                  319 Cancer eye, etc.                  320 Leased                  321 Missing or stolen</p>	DamBCS
Cow Main	Registration	Always	<p>Dam's Registration Number                  Recipient Dam's Registration Number (if an ET Calf)</p>	DamRegNum, RecipRegNum
Cow Main	Weight	No	<p>Cow's weight at weaning                  PIC will use this data if the cow's weight date is within 15 days of the calf's wean weight date.</p>	DamWeight
Cow Main	Wt. Date	No	<p>Date the cow's weight was taken (mm/dd/yyyy).                  PIC will use this data if the cow's weight date is within 15 days of the calf's wean weight date.</p>	DamWeightDate

Supplemental (COW)	Udder Score	No	<p>Dam's Udder Score</p> <p>Udder score is a two-digit code in which the first digit represents the udder's suspension and the second digit denotes the size of the teats. Record the two-digit code by using the following system.</p> <table data-bbox="722 391 1373 639"> <tr> <td><b>SUSPENSION</b></td> <td><b>TEAT SIZE</b></td> </tr> <tr> <td>9 Very tight, level</td> <td>9 Very Small</td> </tr> <tr> <td>8</td> <td>8</td> </tr> <tr> <td>7 Tight, fairly level</td> <td>7 Small</td> </tr> <tr> <td>6</td> <td>6</td> </tr> <tr> <td>5 Moderately tight</td> <td>5 Intermediate</td> </tr> <tr> <td>4</td> <td>4</td> </tr> <tr> <td>3 Pendulous, broken floor</td> <td>3 Large</td> </tr> <tr> <td>2</td> <td>2</td> </tr> <tr> <td>1 Very pendulous, broken floor</td> <td>1 Very large, balloon shape</td> </tr> </table>	<b>SUSPENSION</b>	<b>TEAT SIZE</b>	9 Very tight, level	9 Very Small	8	8	7 Tight, fairly level	7 Small	6	6	5 Moderately tight	5 Intermediate	4	4	3 Pendulous, broken floor	3 Large	2	2	1 Very pendulous, broken floor	1 Very large, balloon shape	DamUdderScore
<b>SUSPENSION</b>	<b>TEAT SIZE</b>																							
9 Very tight, level	9 Very Small																							
8	8																							
7 Tight, fairly level	7 Small																							
6	6																							
5 Moderately tight	5 Intermediate																							
4	4																							
3 Pendulous, broken floor	3 Large																							
2	2																							
1 Very pendulous, broken floor	1 Very large, balloon shape																							
Bull Main	Registration	Always	Sire's Registration Number	SireRegNum																				