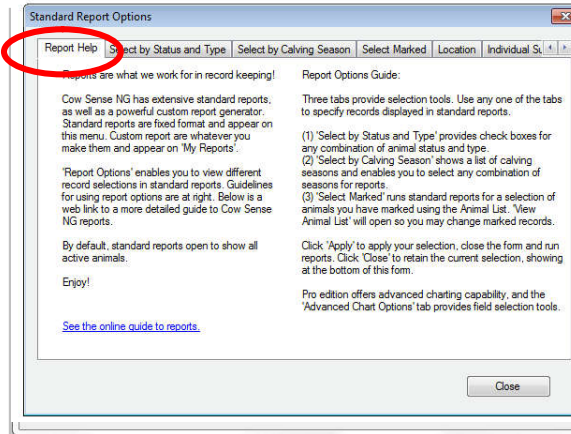


Discussion:

In addition to our powerful custom reports available from the My Reports Menu, Cow Sense NxGen has extensive standard report options. Standard Reports are pre-defined and fixed format quickly generate the information you wish displayed. You **can** control what Standard Fields you wish to include as data to be displayed for these reports are driven by the fields you have selected in Options > Data Field Settings. However the formatting can't be changed or modified. This information can be easily printed or the data can be exported for further analysis.

Document Number:
NGG_002
 Issue Date: **6/20/2017**
 Product: **Cow Sense[®]**
NxGen
 Version: **5 and later**
 Page: **1 of 8**

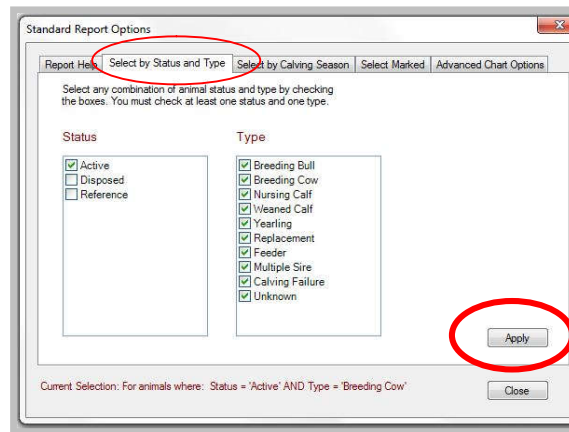
Click on “Standard Reports” from the Task Pane. Click on “Options” to view and select your report options. In the Standard Report Options window, you can review the information about reports on the “Reports Help” tab.



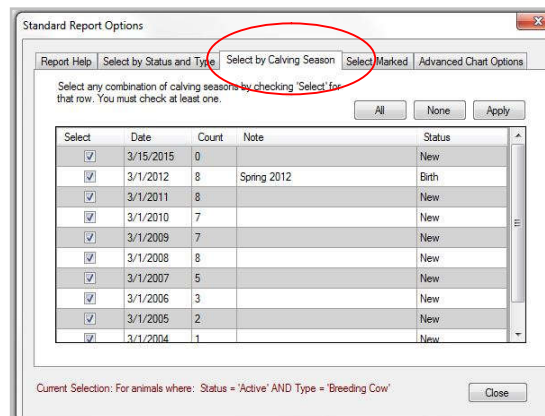
By default, Standard Reports displays information on all your active animals. If you want to select specific records to be displayed in Standard Reports click on one of the additional tabs (Select by Status and Type, Select by Calving Season, or Select Marked). Additional report types are available in NxGen Pro. Access settings for these reports on the Location, Individual Summary, and Advanced Chart Options tabs. However, records for these additional reports are still driven by the current animal selections.

Select Animals:

Click the ‘Select by Status and Type’ tab to select only records of any combination of Status and Type. For example, you may wish to view only your Active Breeding Cows. In this case, you would check Active under Status, and Breeding Cow under Type. Then click Apply. Note the record selection is displayed below for you to confirm.

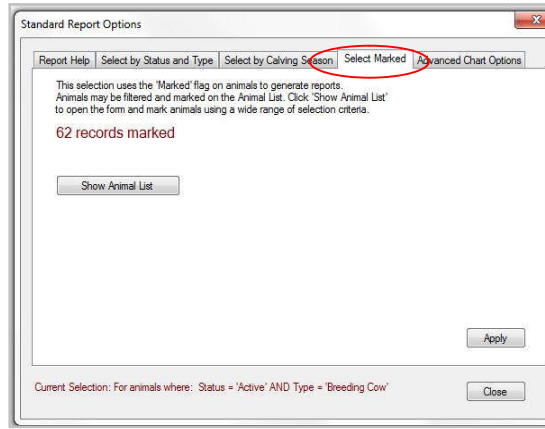


The “Select by Calving Season” tab allows you to select any combination of records by calving season. Note that you can select ALL calving seasons, or you can select NONE to deselect all currently selected seasons then you can reselect only the season or seasons of interest. Click Apply once you have made your selection.



Click the “Select Marked” tab to select only records that have been marked in the Individual Animal Form or List view. This is a powerful way for you to select only the animal records of interest to be displayed in the report. The Show Animal List button opens the List View, allowing you to create a selection of animals you would like to mark and include. Refer to the Animal List tutorial for more information.

* Note that the current selection is displayed in red at the bottom of the Options window.

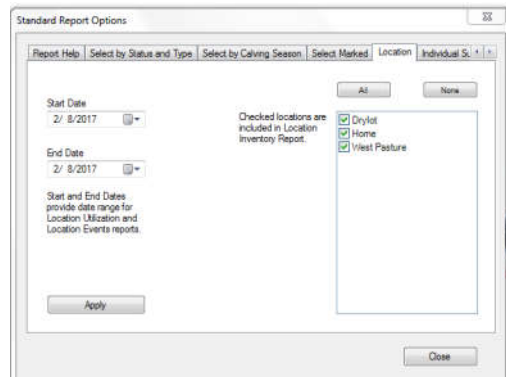


Make your animal record selection from only 1 of the 3 tabs. Once you’ve made your animal selection, click “Apply” on the Select screen to apply your changes and close the Standard Report Options window.

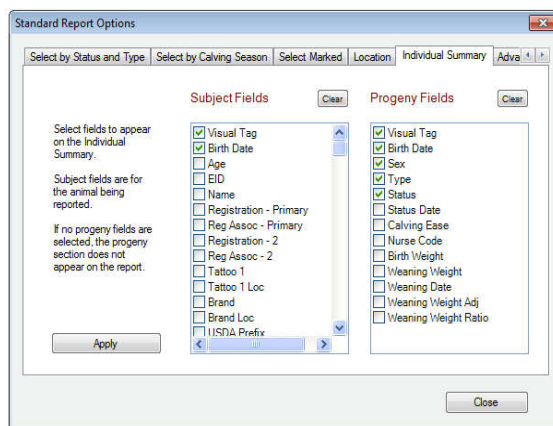
Additional Report Options:

Reopen the Standard Report Options function to access options for additional report types.

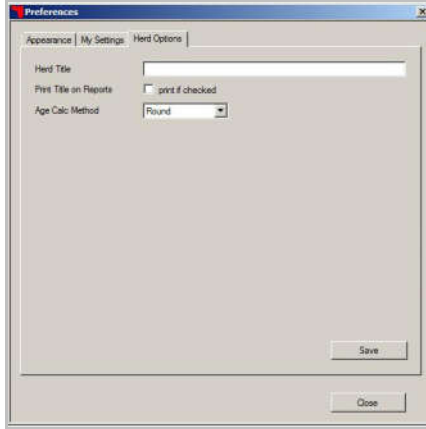
The Location tab allows you to select animals based on the location to which they are assigned. If you utilize the Location Wizard to group animals by pasture or other location, this is a simple way to select those animals in a report. Click the box next to the locations you would like to include in your reports. You may also select a date range to include in Utilization and Location Event reports.



The Individual Summary allows you to select up to 24 fields to be displayed for the selected records. Options include Subject Fields (those of the animal) and Progeny Fields (those of offspring). This list of available fields is driven by the fields that are turned on for display under the Options Menu > Data Field Settings.



If you wish to print a header on your reports, you can do so from the Task Pane Options > Preferences > Herd Options Menu. Enter the title you wish included on your report and check the “print if checked” box (next to Print Title on Reports).



Viewing your Report:

Under “Standard Reports” in the Task Pane you’ll see several standard report types:

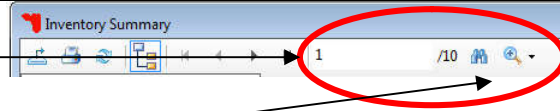
- Individual Summary
- Inventory
- Traits
- Performance
- Breeding
- Location
- Treatment

Select your report type and then select the Summary or List view. Some report types have different and/or additional views, but the settings remain the same.

Toolbar:

<p>Notice the toolbar at the top of the report. At the top left you have an icon for exporting your data. You may choose to export your report to a .csv or text file for further analysis. Click the Export button and name your file. Select the location to which you wish to save your data. Click the SAVE button to export your data.</p>	
<p>You may print your report to your default printer.</p> <p>The Refresh icon allows you to update an open report to include data added or changed after the report was created.</p>	
<p>The Group Browser icon will appear if there are multiple reports to be displayed for the area selected. This creates an index of the standard reports created for that area and allows you to easily browse through reports.</p>	
<p>Next, you see the arrows that will allow you to navigate through the individual pages of the reports created. The single arrows will move you 1 page in either direction. The arrow pointing to a line will move you to the first or last page of the report.</p>	

The next portion of the toolbar displays the current page and total number of pages in your report.



Finally, you can zoom in or out of the report as you wish by using the binoculars or magnifying glass icons.

Close the report by clicking on the “X” in the upper right corner.

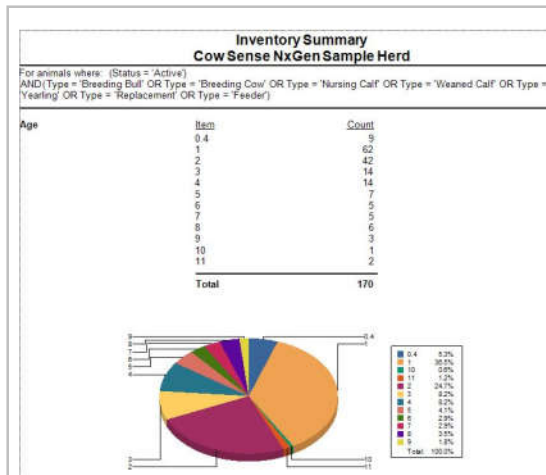
Individual Summary Report:

Individual summary reports provide a listing of information about an individual animal. Options include pedigree, progeny, or combined reports. These reports may either be regular with only type, or picture with both the type and a picture of the animal. Data included in the Individual Summary Report is driven by the selections made in the Individual Summary tab in Standard Report Options.

Individual Summary - Combined					
2 Records: Marked animals					
Individual Summary: RN34					2/28/2017
Visual Tag	RN34	Birth Date	3/6/2003	Age	14
Name	LSF AMBROSIA F602 N	Type	Breeding Cow	Status	Active
Breed J	AR	EPD Date		EPD BW	
EPDMK		EPD TM		EPD WW	
EPD YW		EPD BF			
Sire	LCHMN END CUT 1383G	SS	<Missing>	SSS	<Missing>
		SD	<Missing>	SSD	<Missing>
		SDS	<Missing>	SSDS	<Missing>
		DS	<Missing>	DSS	<Missing>
Dam	PARK MISS HEAVENLY F602	DSD	<Missing>	DSSD	<Missing>
		DDS	<Missing>		

Summary Reports:

Summary reports are available for each report category. To create Summary Reports, click on the desired item under Standard Reports, and select Summary. At the top of the Summary report you'll see the current animal selection is displayed for reference. (If you wish to change your selection, return to the Standard Reports Menu from the Task Pane and click on “Options”.) Below that you'll see summary information for each Inventory category including Age, Brand, Disposal Information, Location data, Origin, Status and Type. Again, this information is populated by what you have turned on in Options > Data Field Settings.



List Report:

You may view a List Report by clicking on Standard Reports type and then selecting the List option. Selecting the List will generate a report that lists each selected animal individually with their relevant field data (determined by what you have turned on under Options > Data Field Settings. If a large number of data fields are turned on, the list may display in several parts to include all fields.

Traits List							
Cow Sense NxGen Sample Herd							
K3 Records: For animals where: Status = 'Active' AND Type = 'Breeding Cow'							
Visual Tag	Color Code	Last Calf Born	Udder Score	Body Condition	Preg Status	Days Bred	Preg Check Date
RR52	1	1/15/2013					
RS65	1	1/15/2013					
RS62	1	3/8/2013					
RS66	1	3/8/2013					
RT71	1	2/10/2013					
RT72	1	1/15/2013					
RJ89	1	2/28/2013					
RJ86	1	2/16/2013					
RJ87	1	2/2/2013					
RV92	1	3/4/2013					
RV96	1	2/27/2013					
RV95	1	3/12/2013					

Each report type works in a similar fashion. Each is available in both a summary report that includes summary data and charts, and a list report that lists each selected animal and their data individually. In addition, Performance Reports may include PRO Edition options; Location reports include Inventory, Utilization, and Event Log reports; and Treatment Reports include a History option. Find more information on Treatment Reports in the separate Guide to Treatment Reports. Test different report types and layouts to find the setup best suited for the data you would like to compile.

PRO Edition Added Features:

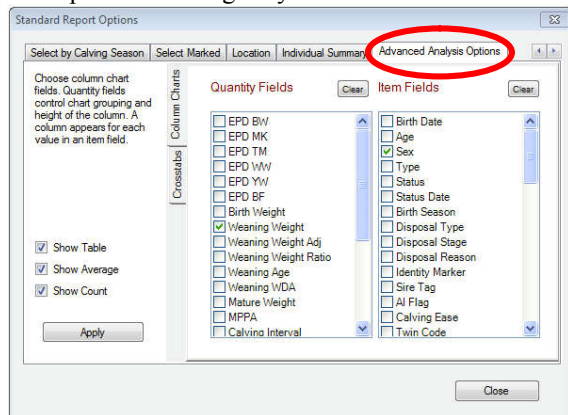
The following features are available only in the PRO Edition of Cow Sense NxGen. The PRO Edition provides you the ability to create column charts, cross tabular tables and calving distribution reports with the Advanced Analysis functions. These are accessed through an additional tab in Standard Reports > Options. Animal record included in Advanced Analysis Reports are still driven by the selections made in Standard Report>Options.

Advanced Analysis-Column Chart:

On the “Column Charts” tab of Advanced Analysis, you can select both your quantity (column) and item (row) fields (Select 2 fields – one from each list. Additional selections will generate additional reports).

Once your selection is complete click “Apply”

Example: Birth Weight by Sex

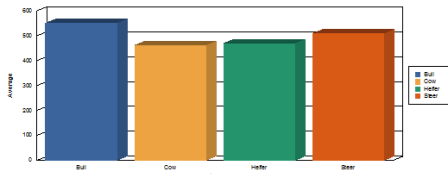


For calving seasons: 1/24/2016

Weaning Weight by Sex

	Average	Count	Result
All Records	499	82	
Bull	551	27	
Cow	463	6	
Heifer	470	43	
Steer	510	6	

Weaning Weight by Sex



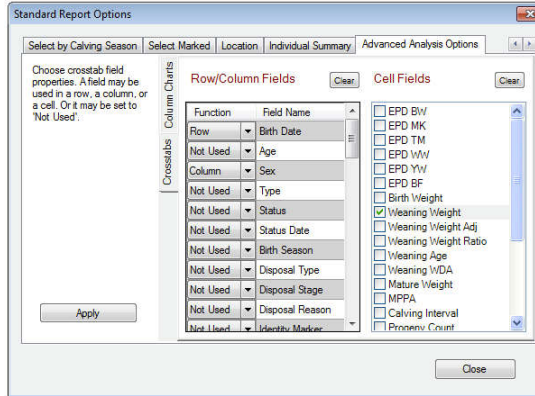
You can view your column chart from the Standard Reports Menu choose > Advanced Analysis > Column Chart in the Task Pane. The Average and Count will be displayed, followed by graphical representation.

Advanced Analysis-Crosstabs:

On the “Crosstabs” tab of Advanced Chart Options, you can select the fields which will populate your rows, columns, and cells (Select 3 fields – Row, Column, and Cell Fields. Additional selections will generate additional reports).

Once your selection is complete click “Apply”

Example: Weaning Weight by Sire Tag and Sex



You can view your cross tabular table from the Standard Reports Menu choose > Advanced Analysis > Crosstab in the Task Pane.

Advanced Analysis: Crosstab
Red Angus

For calving seasons: 1/24/2016

Weaning Weight: Birth Date x Sex

	Total	Bull	Cow	Heifer	Steer	
Total	Average Count	499 82	551 27	463 6	470 43	510 6
2016-01-07	Average Count	592 1	592 1	0 0	0 0	0 0
2016-01-12	Average Count	540 1	0 0	0 0	540 1	0 0
2016-01-15	Average Count	528 1	528 1	0 0	0 0	0 0
2016-01-16	Average Count	614 3	740 1	0 0	551 2	0 0
2016-01-17	Average Count	609 4	657 2	0 0	561 2	0 0
2016-01-18	Average Count	498 2	0 0	0 0	498 2	0 0
2016-01-19	Average Count	584 1	0 0	0 0	584 1	0 0
2016-01-20	Average Count	586 2	586 2	0 0	0 0	0 0
2016-01-21	Average Count	526 1	0 0	0 0	526 1	0 0
2016-01-22	Average Count	521 2	0 0	0 0	521 2	0 0
2016-01-23	Average Count	540 3	676 1	0 0	472 2	0 0
2016-01-24	Average Count	579 3	579 3	0 0	0 0	0 0

Advanced Analysis – Calving Distribution:

Calving distribution is the percent of cows calving in the first 21 days (bred in the first heat cycle), 42 days (bred in the 2nd heat cycle) and 63 days (bred in the 3rd heat cycle). This report is a great tool to assist you to evaluate reproductive performance in your herd. The formula Cow Sense has adopted to calculate our Calving Distribution Report is derived from the NCBA IRM Standard Production Analysis (SPA) Guidelines. We search through your recorded calving data

to locate the birth date for the third calf from a mature (age >2) cow to establish the beginning of the calving period. We then divide the distribution into Early (born prior to the third mature cow calving date), first 21 days, second 21 days, third 21 days and Late.

Determining the third mature cow calving date depends on the "Dam Age" field on the Traits tab. This is the age of the dam at birth of the calf, rounded. This field will only be displayed on the calf record if you have toggled it "On" from the Main Sidebar Menu > Options > Data Field Settings > Standard Fields. The field is populated when the Compute Birth function is run. With Dam Age filled, we can determine the date the third mature cow calved.

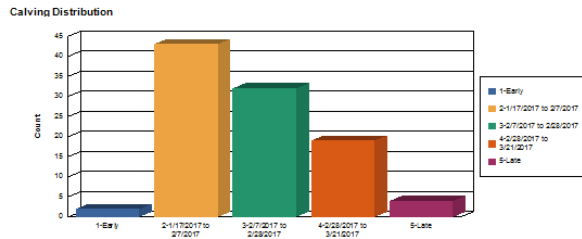
The Calving Distribution Report is generally driven by the Calving Season selected in Standard Reports > Options (discussed previously, page1). In addition there maybe some situations where you may wish to only include certain records of animals that were managed differently within a Breeding and subsequent Calving Season such as by Dam Age or Location. In these instances, you can select and filter a subset of records in List View, Mark them (toggle on the Identity Marker flag) and choose to display Marked Records in Report Options (page1).

If the Calving Distribution report is run without the Dam Age field populated the distribution's start date will be the first birth date in the selection.

**Advanced Analysis: Calving Distribution
Red Angus**

For calving seasons: 1/24/2017

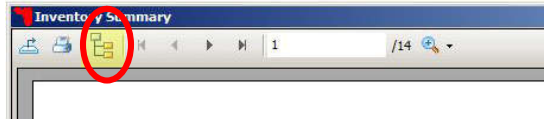
Calving Distribution	Result
All Records	100 100%
1-Early	2 2%
2-1/17/2017 to 2/7/2017	43 43%
3-2/7/2017 to 2/28/2017	32 32%
4-2/28/2017 to 3/21/2017	19 19%
5-Late	4 4%



The calf records in the calving season will be grouped into the previously defined date ranges and shown in both a chart and bar graph form. View the Calving Distribution Report by clicking Advanced Analysis> Calving Distribution in the task pane.

Group Browser:

Note: The Group Browser button is also available for these advanced reports. As you may recall this feature on the toolbar allows you to easily navigate multiple reports dependent upon the variables you had selected.



The Group Browser lists all the reports generated by the selections you have made and displays them to the left of the report. Simply click on the report title in the browser to navigate between reports displayed.

Performance Column Charts - Part 2

Age Adj WW of Progeny by Age	Average	Count
All Records	644	1
5	670	1
8	647	1
9	643	1
10	634	1
11	640	1
12	600	1

Location Reports:

Locations must be entered in Cow Sense before Location Reports may be generated. More information on the Location Feature and Location Reports is available in the Location Wizard Video Tutorial. Location Report Options are Summary, Inventory, Utilization, and Event Log Reports. Locations included in Location Reports are driven by selections made on the Location Tab of the Standard Report Options Screen. Dates selected in Options also drive the records that are included in Utilization and Event Log Reports.

Location Summary Reports work in the same way as other Summary Reports, by listing information as well as displaying it in a graph format.

The Location Inventory provides a list of animals assigned to each location. Navigate between locations by using the group browser.

Location Inventory				
Red Angus				
Inventory reported in all active locations.				
Location	Animal Type	Visual Tag	EID	In Date
Red Angus				
Count for: Grandmas				2
Grandmas	Breeding Cow	RA38		05/07/2016
	Breeding Cow	RB415		05/07/2016
Count for: Grandmas				2
Count for: Heifer Dry Lot				28
Heifer Dry Lot	Breeding Cow	RC51		05/01/2016
	Breeding Cow	RC52		05/01/2016
	Breeding Cow	RC53		05/01/2016
	Breeding Cow	RC54		05/01/2016
	Breeding Cow	RC55		05/01/2016
	Breeding Cow	RC56		05/01/2016
	Breeding Cow	RC57		05/01/2016

Utilization Reports display how many hours each location has been used over the time period selected in Options.

Location Event Log Reports display all records of animals being moved within the time period selected in Options. The previous location, new location, individual animal information, and moving date are all displayed in a list format.

Location Event Log						
Red Angus						
Movement events reported for dates from 1/1/1970 to 3/1/2017.						
From Location	To Location	Animal Type	Visual Tag	EID	In Date	Deleted
Red Angus						
Move Index: 1						
Unassigned	Home (A553)	Breeding Cow	RX04		05/09/2015	
Move Index: 2						
Unassigned	Home (A553)	Breeding Cow	RX012		05/09/2015	
Move Index: 3						
Unassigned	Home (A553)	Breeding Cow	RA32		05/09/2015	
Move Index: 4						
Unassigned	Home (A553)	Breeding Cow	RZ25		05/09/2015	
Move Index: 5						
Unassigned	Home (A553)	Breeding Cow	RZ212		05/09/2015	
Move Index: 6						
Unassigned	Home (A553)	Breeding Cow	RX01		05/09/2015	

Please contact us at support@cowsense.com or 800-584-0040 for any questions or assistance.