

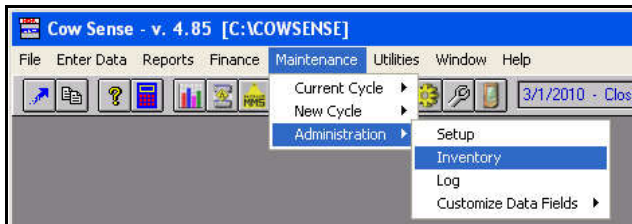
## Conversion of Cow Sense Version 4 data to a Cow Sense NxGen herd file

**Discussion:** The purpose of this Product Support Bulletin is to outline the steps required for converting Cow Sense version 4 (v. 4.0) data to a Cow Sense NxGen herd file.

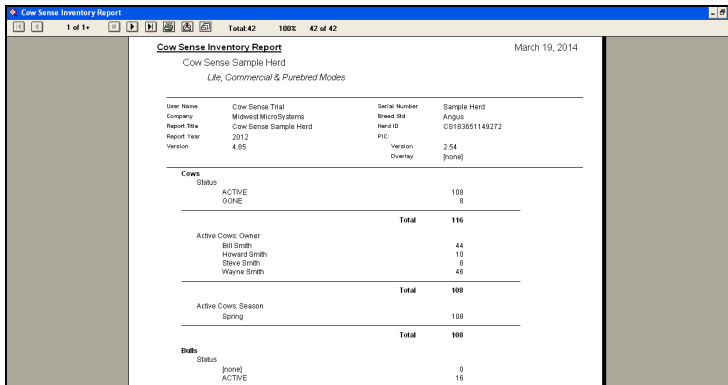
1. Are you currently at Cow Sense version 4.85 (v. 4.85)?
  - The Current Cow Sense Version number is displayed when you first launch Cow Sense (middle of the screen underneath the logo); above the Main Menu of the Cow Sense Home Screen; or from the Main Menu choose **Help > About Cow Sense**. If you are at v. 4.85 continue to Step 2, if not, please go to the Cow Sense Corral ([www.cowsensecorral.com](http://www.cowsensecorral.com)) to download the latest version.
    - If you do not remember your Cow Sense Corral login, click on **Send my login!** to have it emailed to you.
    - After you have logged into the Corral, click on the **Downloads** button.
    - Under **Full Installs**, click on Cow Sense v. 4.85.

If you are pre-Cow Sense v. 4.0, you will need to purchase the v. 4.0 upgrade.

2. Review your current Cow, Calf, and Bull inventories.
  - In Cow Sense v. 4.0, go to **Maintenance > Administration > Inventory**.



- Your Cow Sense **Inventory Summary** will appear. This inventory summary lists the number of all **Active** and **Gone** cows, calves, and bulls in your Cow Sense herd.



| Cow Sense Inventory Report        |                       |               |                | March 19, 2014 |  |
|-----------------------------------|-----------------------|---------------|----------------|----------------|--|
| Cow Sense Sample Herd             |                       |               |                |                |  |
| Life, Commercial & Purebred Modes |                       |               |                |                |  |
| User Name                         | Cow Sense Trial       | Serial Number | Sample Herd    |                |  |
| Company                           | MidwestMicroSystems   | Breed ID      | Angus          |                |  |
| Report Title                      | Cow Sense Sample Herd | Herd ID       | CS193851149272 |                |  |
| Report Year                       | 2012                  | PVC           |                |                |  |
| Version                           | 4.85                  | Version       | 2.54           |                |  |
|                                   |                       | Overlays      | [none]         |                |  |
| <b>Cows</b>                       |                       |               |                |                |  |
| Status                            |                       |               |                |                |  |
| ACTIVE                            |                       |               |                | 188            |  |
| GONE                              |                       |               |                | 8              |  |
|                                   |                       |               | <b>Total</b>   | <b>196</b>     |  |
| Active Cows: Owner                |                       |               |                |                |  |
|                                   | Bill Smith            |               |                | 44             |  |
|                                   | Howard Smith          |               |                | 10             |  |
|                                   | Steve Smith           |               |                | 8              |  |
|                                   | Wayne Smith           |               |                | 45             |  |
|                                   |                       |               | <b>Total</b>   | <b>108</b>     |  |
| Active Cows: Season               |                       |               |                |                |  |
|                                   | Spring                |               |                | 108            |  |
|                                   |                       |               | <b>Total</b>   | <b>108</b>     |  |
| <b>Bulls</b>                      |                       |               |                |                |  |
| Status                            |                       |               |                |                |  |
| [none]                            |                       |               |                | 0              |  |
| ACTIVE                            |                       |               |                | 16             |  |

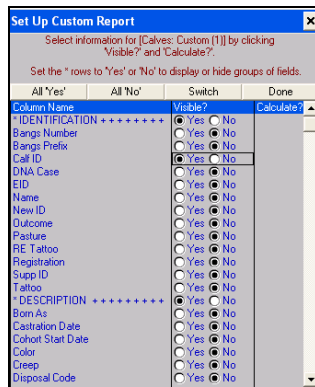
- When reviewing your inventory, verify the correct number of cows, calves and bulls are appearing as **Active**.
  - If your inventory contains too many **Active** animals, you will need to change cow/calf/bull status to **Gone**. (steps shown below)
- \*Note: Your inventory report may contain more than one page. Click the arrow buttons at the top of the Inventory Report to scroll through all pages available.

If your Active animal inventory contains too many animals:

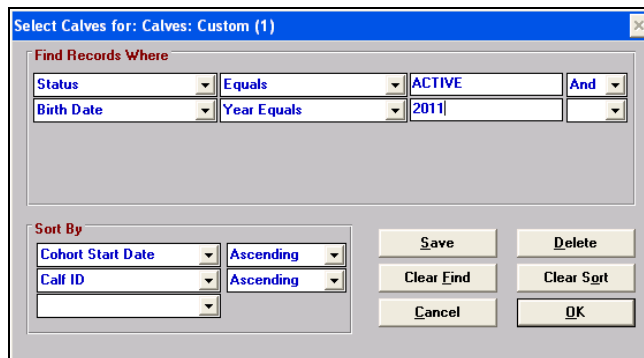
- A. For cows: go to **Enter Data > Cows > Enter Cows**.
  - Click the **Find** button and type in the ID of the cow needing to be marked Gone. Change the cow's status from Active to Gone.
- B. For bulls: go to **Enter Data > Bulls > Enter Bulls**.
  - Click the **Find** button and type in the ID of the bull needing to be marked Gone. Change the bull's status from Active to Gone.
- C. For calves: Create a custom calf report by going to **Reports > Calves > Custom**.
  - Choose **\*\*Active Calves\*\*** from the Selection drop down list to see all active calf records in your herd.



- To narrow down the fields (columns) that appear in the report, click the **Setup** button to select the data fields you'd like to see in your report. Be sure to include **Status**.

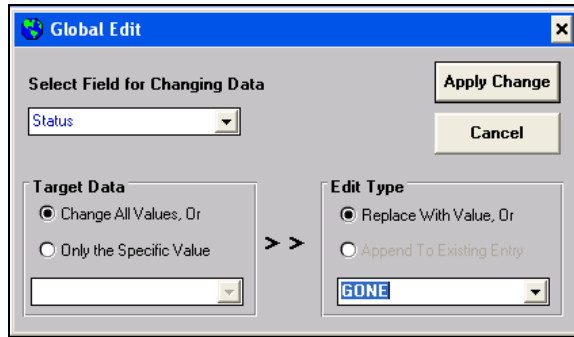


- To narrow your calf selection further, click the **Select** button.



- Here, you can create a selection for calves born in a certain year, or who were included in a certain production cycle.
  - Note: if you have promoted replacement heifers or bulls through **Maintenance > New Cycle > Replacements**, the Status of these calf records have already been changed to **Gone** and exist as Cow or Bull records.

- When you have completed narrowing down your selection of calves that should no longer be “Active,” use the **Global Edit** button to change all selected calves to **Gone**.



- **Global Edit** is located on the far right of the button bar menu and looks like a small Earth or Globe.
  - The Global Edit window will open, under **Select Fields for Changing Data**, click the drop down arrow and scroll to **Status**.
  - Under **Target Data**, click on the **Change All Values** button.
  - Under **Edit Type**, choose **Replace With Value** and select **Gone** from the drop down box.
  - Click **Apply Change**.

- \*Note on calf histories:
  - Calf History of 99 (Missing Data): Calf records with this history code will not be copied into the NxGen herd file.
    - If you know the appropriate outcome for the calf, make the change in the v. 4.85 production cycle.
  - Calf Histories of 80, 81, 82 (Embryo): EZ Edition does not offer embryo management. Calf records with these history codes will not be copied into the NxGen herd file.
    - If these history codes were over-looked, and there was a live calf (or loss) that resulted from the transplant, change the calf history to account for the calf accordingly.
  - Calf History of 9 (Bred Cow Sold): A record with this history code will not be copied into the NxGen Herd file. This is used for a cow outcome in Cow Sense v. 4.0 that is not relevant in NxGen.
  - Calf Histories 6-8 (Abortion, Open Cow, Bred Cow didn't calve): These records are copied into NxGen as a breeding outcome. Version 4.0 Calf History Codes of 7 and 8 will be recorded as “Failed to Conceive”, whereas Calf History of 6 will be recorded as “Abortion”.
  - Calf Histories 1-5 (Live calf, calf deaths): These records are copied into NxGen as an animal record.

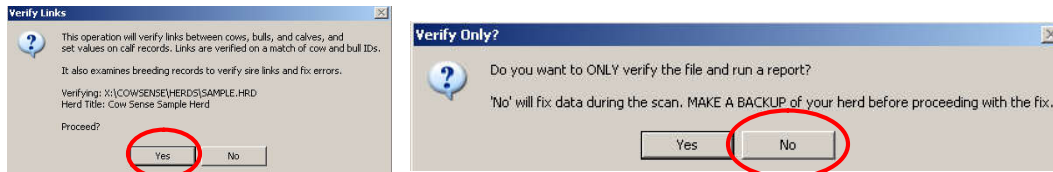
3. Re-review your Inventory Summary.

- Make any other changes to your **Active Animal Inventory** using the steps above until the correct number of cows, calves and bulls are shown as active.
- Make a backup of your Cow Sense v. 4.85 herd by going to **Utilities > Local Backup/Restore > Local Backup**.
  - For complete backup instruction, please view our Product Support Bulletin for Herd Backup/Restore here: <http://www.midwestmicro.com/docs/psb/psb008.pdf>

4. Verify Links

- Prior to converting your Version 4 herd file to NxGen, we suggest you run a utility program we built to verify all the internal record links. This Utility is found in the Cow Sense Corral on the Downloads page. Scroll down to find V4 Service Packs, and open Verify Links v1.0. The direct link is: [http://www.mmsweb.us/servicepacks/ver\\_link.exe](http://www.mmsweb.us/servicepacks/ver_link.exe).

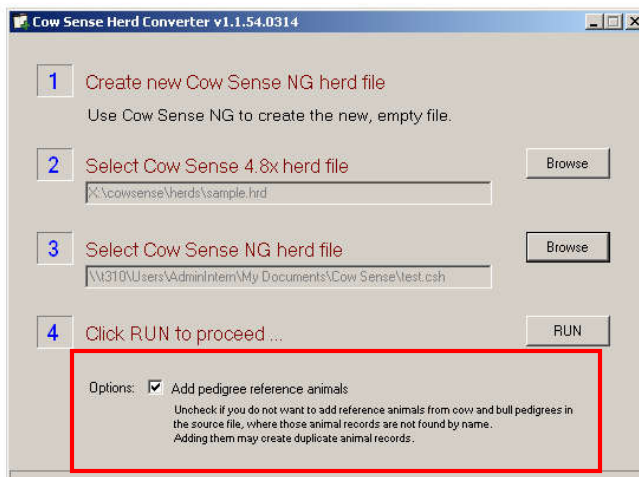
- Download and Save the program locally, then proceed to Run the program. Check that the correct herd file is selected and click Yes on the Verify Links page to run the program. By default, the Verify Links Service Pack will connect to the last herd file you had open in Cow Sense Version 4. Click No on the Verify Only page to allow the program to both verify and fix any linking issues found in the data. Your Cow Sense Herd File must be closed in order for the program to fix any data. Again, make sure you have a backup before completing this step, as directed in Step 3.



- Open, Review, and save the log file to a location you can easily find. If there are issues cited as the program reviews your version 4 herd that are of concern, please send a copy of the log file created to support@cowsense.com for further analysis. If there are no issues reported by this process, proceed with conversion of your version 4 herd to NxGen.
5. If you have not already done so, install Cow Sense NxGen on your computer using the following link: <http://www.cowsense.com/ng/>
    - Select **Download Cow Sense NG**.
    - **Save** the download file.
      - By default, the file will be saved to your **Downloads** folder.
    - **Run** the downloaded file and install Cow Sense NxGen.
  6. Once Cow Sense NxGen is installed, the program will be in **Trial Mode**. When you are ready to activate the program, launch NxGen and choose the **Activate** option.
    - Please note the **Registration Number** displayed. Email this number to [admin@cowsense.com](mailto:admin@cowsense.com) to request activation. We will then send you an **Activation Key**, which will remove the Trial limitations.
    - You will also need your **Serial Number** to activate Cow Sense NxGen. If you do not have your Serial Number, you can find that information in **My Account** at the Cow Sense Corral. You may also request this information by emailing [admin@cowsense.com](mailto:admin@cowsense.com).
  7. After Cow Sense NxGen has been activated, create a **New** herd of your own.
    - To create a new herd file (.csh), go to **File > New**. Enter the name you wish to call your herd file, and click **Save**.
      - By default, NxGen herd files (.csh files) are saved to your computer's **Documents** folder, in the subfolder **Cow Sense**.
      - To see complete instruction on how to create a new herd file, please see page 9 of the **NxGen Quick Start Guide** in the **Help > Quick Start Guide** menu in Cow Sense NxGen.
      - Hint: After you have created your herd file and adjusted field settings from the Options Menu > Data Filed Settings. Make a Backup of the NxGen Herd File. See NGG\_003 Guide to Herd File Backup and Restore.
  8. If Cow Sense NxGen is being installed on a different computer than where Cow Sense v. 4.85 currently resides:
    - Make another backup of your Cow Sense v. 4.85 herd on removable media (such as a flash drive) by going to **Utilities > Local Backup/Restore > Local Backup**. Note that this backup should be made **AFTER** using the Verify Links Utility.
    - Insert your removable media into the computer that is running Cow Sense NxGen.
      - You may leave the backup on the flash drive, or you can copy and paste the file to a convenient location on your computer, such as the Desktop.

9. If Cow Sense NxGen is being installed on a computer that is running Cow Sense v. 4.0, the **Herd Converter** will look to the old v. 4.0 Cow Sense Herds folder and confirm the herd file.
  - Note: If you are using XP Mode or Virtual Box, the **Herd Converter** will not be able to automatically navigate to these folders. You will need to follow the steps in Step 8.

10. Run the **Cow Sense Herd Converter** in Cow Sense NxGen by going to **File > Convert**.
  - To see complete instructions on converting your herd file, please see page 9 in the **NxGen Quick Start Guide** in the **Help > Quick Start Guide** menu in Cow Sense NxGen.
  - **It is important to note** that an option now exists to add pedigree reference animals through the conversion process. In the Version 4 Purebred program, pedigrees could be built by either linking sires and dams to their progeny or typing the names into the pedigree tab of the Enter Cows or Enter Bulls screen. Checking the option “Add pedigree reference animals” will direct the converter to check animal names in the pedigree against existing records in Cow Sense. If it does not find an exact match for these names as existing animal records in Version 4, it creates animal records for these names so they will appear in the NxGen herd file as pedigree references. This option will make duplicate animal records if the animal exists with a slight variation of the name that was typed into the pedigree. Use it with caution. You may wish to do a trial conversion to review the results.



11. Review the **Log File**.
  - If there are errors reported in the Log File, review and fix the data in Cow Sense v.4.0. Repeat the steps above to change your active animal inventory and to make a backup of your v. 4.0 herd file.
  - If you are going to run the **Herd Converter** again, **delete** the previously created Cow Sense NxGen herd file (.csh file) and create a new one. Alternatively if you made a back up of the blank NxGen Herd file as suggested in Step 7, you can simply restore to that file and re-run the conversion.
12. After you are satisfied with the herd conversion, review your **Active Animal Inventory** in Cow Sense NxGen using either the **Individual Animal** or **Animal List** view.
  - Both are found under the **Manage** menu in NxGen.
13. To preserve your Version 4 data in a form that is always accessible, you can Export the data you wish prior to Transferring the License.
  - From the v. 4.0 Main Menu choose **Utilities > Transfer Data > Export** and choose the data you wish to export.
  - This action will export key analytic data to a Tab Delimited Text file (.txt) that can be opened with spreadsheet software.
  - Give the file a name and by default it will be saved in the Cow Sense Directory in the Export Folder.
  - Repeat the process for all data you wish to preserve in this form.

14. Any Custom Fields in use will not be transferred from Version 4 to NxGen through the herd conversion.
  - First, check to see if your previous Custom Fields already exists in NxGen by looking through the list located at **Data Field Settings>Standard Fields** from the left sidebar menu. If you find a field you wish to use, toggle it on. Then Export the data from your Version 4 Custom Field and Import it into the corresponding NxGen field. Refer to the NxGen Video Tutorial and Script Notes for the Import tool for more information regarding this function.
  - If no field in NxGen relates to your Version 4 Custom Field, you may create a Custom Field in NxGen at **Data Field Settings>Custom Fields** and use the same process as above to Export and Import your data.
15. If Treatments are recorded in Version 4, these will not be transferred through the herd conversion. Please contact Cow Sense Support for help moving your Treatment records into NxGen.
16. For Version 4 Cow COMM Pro users, the Historical Measures table will not be transferred to NxGen through the standard herd conversion process. Again, please contact Cow Sense Support for help moving measures into NxGen.
17. When you are satisfied with the converted data, complete the **Transfer** process from Cow Sense v. 4.0.
  - From the v. 4.0 program Main Menu choose **Help > Transfer License**.
  - Follow the prompts to remove and transfer your license to complete the Cow Sense NxGen upgrade process.

Please contact us at [support@cowsense.com](mailto:support@cowsense.com) or 800-584-0040 for any questions or assistance.